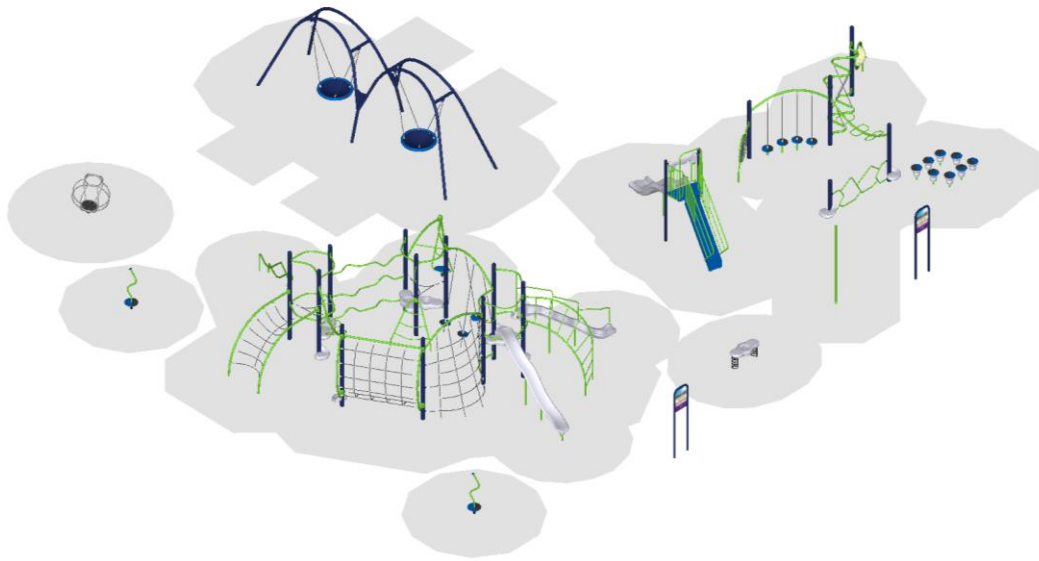


# City of Sparks Recreation Park

Proposal # 907-82087-3  
August 20, 2014



Presented by  
**Buell Recreation**  
and





August 20, 2014

Rick Darby  
City of Sparks  
431 Prater Way  
Sparks, NV 89431

Dear Rick Darby:

Buell Recreation is delighted to provide City of Sparks with this playground equipment proposal.

This design was developed with your specific needs in mind, and we look forward to discussing this project further with you to ensure your complete satisfaction. Buell Recreation is confident that this proposal will satisfy City of Sparks's functional, environmental, and safety requirements -- and most importantly -- bring joy and excitement to the children and families directly benefiting from your new playground.

You have our personal commitment to support this project and your organization in every manner possible, and we look forward to continue developing a long-standing relationship with City of Sparks. We appreciate your consideration and value this opportunity to earn your business.

Sincerely,

Doug Buell  
Buell Recreation  
7327 SW Barnes Rd. #601  
Portland, OR 97225

## **Design Summary**

Buell Recreation is very pleased to present this Proposal for consideration for the Recreation Park located in Sparks. BCI Burke Company, LLC has been providing recreational playground equipment for over 90 years and has developed the right mix of world-class capabilities to meet the initial and continuing needs of City of Sparks. We believe our proposal will meet or exceed your project's requirements and will deliver the greatest value to you.

The following is a summary of some of the key elements of our Proposal:

- Project Name: Recreation Park
- Project Number: 907-82087-3
- User Capacity: 140
- Age Groups: Ages 2-5 years, 5-12 years
- Dimensions: 76' 8" x 86' 3"
- Designer Name: John Uelmen

Buell Recreation has developed a custom playground configuration based on the requirements as they have been presented for the Recreation Park playground project. Our custom design will provide a safe and affordable playground environment that is aesthetically pleasing, full of fun for all users and uniquely satisfies your specific requirements. In addition, proposal # 907-82087-3 has been designed with a focus on safety, and is fully compliant with ASTM F1487 and CPSC playground safety standards.

We invite you to review this proposal for the Recreation Park playground project and to contact us with any questions that you may have.

Thank you in advance for giving us the opportunity to make this project a success.

INFORMATION  
MINIMUM FALL ZONE  
SURFACED WITH  
RESILIENT MATERIAL  
AREA

4128 SQ.FT.

PERIMETER  
713 FT.

STRUCTURE SIZE  
76' 8" x 86' 3"

STRUCTURE IS DESIGNED  
FOR CHILDREN AGES:

- 6-23 MONTH OLDS
- 2-5 YEAR OLDS
- 5-12 YEAR OLDS
- 13 + YEAR OLDS

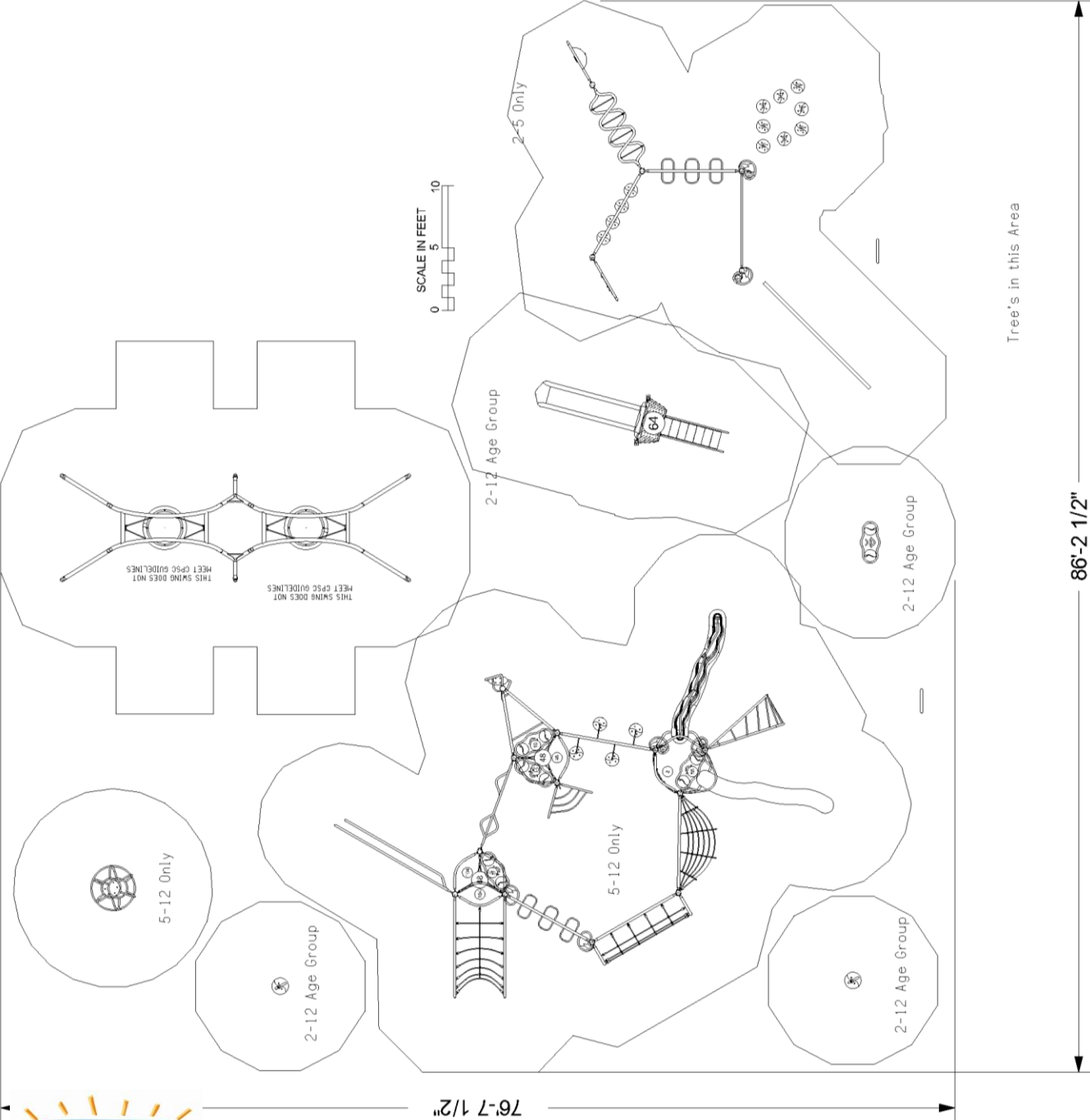


To verify product certification,  
visit [www.ipema.org](http://www.ipema.org)

The play components identified  
in this plan are IPEMA  
certified. The use and layout of  
these components conform to the  
requirements of ASTM F 1487.  
To verify product certification,  
visit [www.ipema.org](http://www.ipema.org)

The space requirements shown  
here are to ASTM standards.  
Requirements for other standards  
may be different.

The use and layout of play  
components identified in this plan  
conform to the CPSC guidelines.



**WARNING!**

ACCESSIBLE SAFETY SURFACING MATERIAL IS REQUIRED BENEATH  
AND AROUND THIS EQUIPMENT.  
FOR SLIDE FALL ZONE SURFACING AREA SEE CPSC's Handbook for  
Public Playground Safety.  
PLATFORM HEIGHTS ARE IN INCHES ABOVE RESILIENT MATERIAL.

**ADA ACCESSIBILITY GUIDELINE (ADAAG CONFORMANCE)**

NUMBER OF PLAY EVENTS:	41
NUMBER OF ELEVATED PLAY EVENTS:	0
NUMBER OF ELEVATED PLAY EVENTS ACCESSIBLE BY RAMP:	PROVIDED: 0
NUMBER OF ELEVATED PLAY EVENTS ACCESSIBLE BY TRANSFER SYSTEM:	PROVIDED: 0
NUMBER OF ELEVATED PLAY EVENTS ACCESSIBLE BY RAMP OR TRANSFER SYSTEM:	PROVIDED: 0
NUMBER OF GROUND LEVEL PLAY EVENTS:	PROVIDED: 41
NUMBER OF TYPES OF GROUND LEVEL PLAY EVENTS:	PROVIDED: 12

86'-2 1/2"

76'-7 1/2"

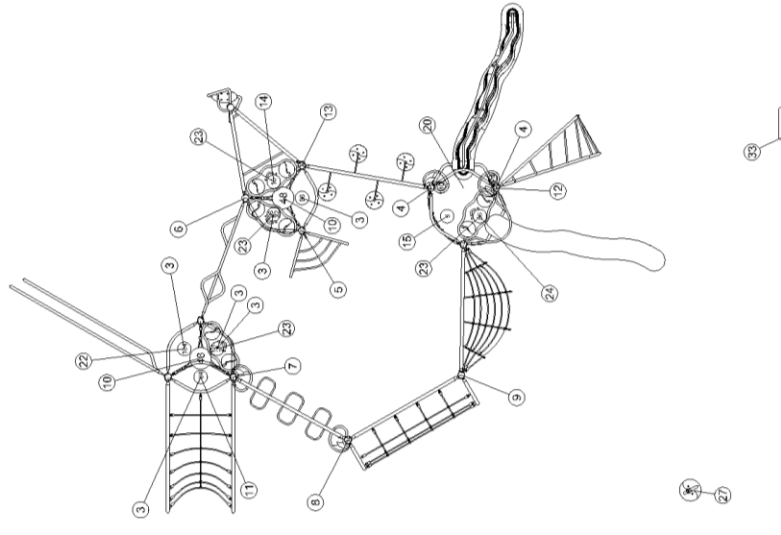
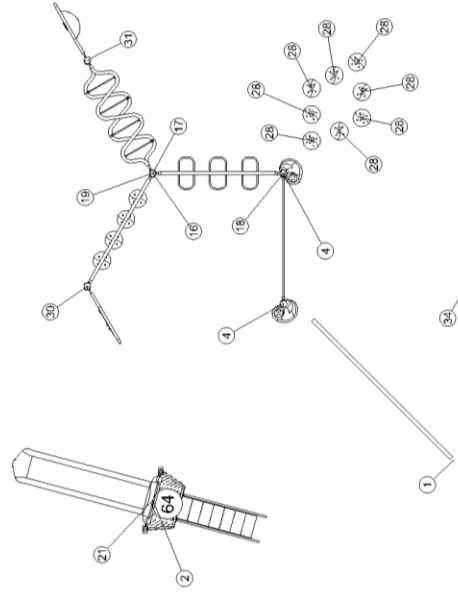
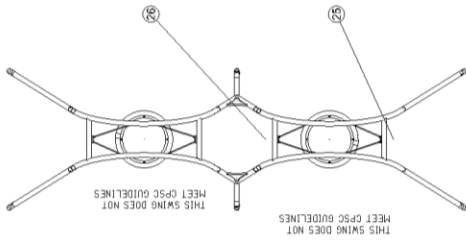


SERIES: Basics, Intensity  
SITE PLAN  
DRAWN BY: John Uelmen

Recreation Park  
98 Richards Way  
Sparks, NV 89431

August 20, 2014  
Buell Recreation  
907-82087-3

ITEM	COMP	DESCRIPTION
1	200-0045	BALANCE BEAM
2	230-0210	SLIDE PLATFORM AND STAIR 64"
3	370-0001	AGILITY ARC
4	370-0002	PEP STEP
5	370-0003	VITAL VORTEX CLIMBER
6	370-0004	POWER PIPES CLIMBER
7	370-0005	ATHLETIC ARCH OH
8	370-0007	NIMBLE NET ROPE CLIMBER
9	370-0008	WILD WEB ROPE CLIMBER
10	370-0009	HEALTHY HAMMOCK
11	370-0010	AGILE CANYON ROPE CLIMBER
12	370-0014	HYPER HELIX CLIMBER
13	370-0024	DYNAMIC DISCS
14	370-0025	SPINNER, EXTREME CYCLONE
15	370-0026	LIMBER LADDER ROPE CLIMBER
16	370-0029	DYNAMIC DISCS 2-5
17	370-0030	ATHLETIC ARCH 2-5
18	370-0034	ODYSSEY POST LINK SINGLE
19	370-0815	TWISTING TRAVERSE 2-5
20	370-1576	STRENGTH STEPPER CLIMBER
21	430-0619	ROCKN ROLL SLIDE, 64" - 72"
22	470-0100	RAPID RAILS, 48"
23	470-0101	DYNAMIC PAD
24	470-0102	SWIFT GLIDER
25	550-0157	VOLUTO
26	550-0166	VOLUTO ADD-ON BAY
27	560-0457	SWIFT TWIST SPINNER
28	560-0461	INTENSITY STEP SPOT POD 8" -
29	560-2570	COMET 1
30	570-0667	CHARADE RING PANEL
31	570-0688	PADDLE BALL RING PANEL
32	570-0770	DYNAMIC SURFER
33	580-1294	FS WELCOME SIGN, AGES 5-12
34	580-1296	FS WELCOME SIGN, AGES 2-5 B



SERIES: Basics, Intensity  
 COMPONENT PLAN  
 DRAWN BY: John Uelmen

Recreation Park  
 98 Richards Way  
 Sparks, NV 89431

August 20, 2014

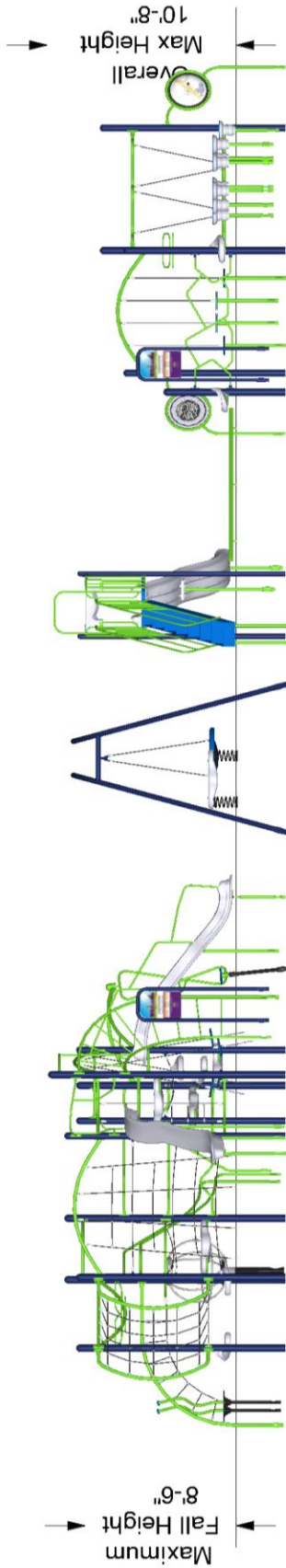
Buell Recreation  
 907-82087-3



SERIES: Basics, Intensity  
ELEVATION PLAN  
DRAWN BY: John Uelmen

Recreation Park  
98 Richards Way  
Sparks, NV 89431

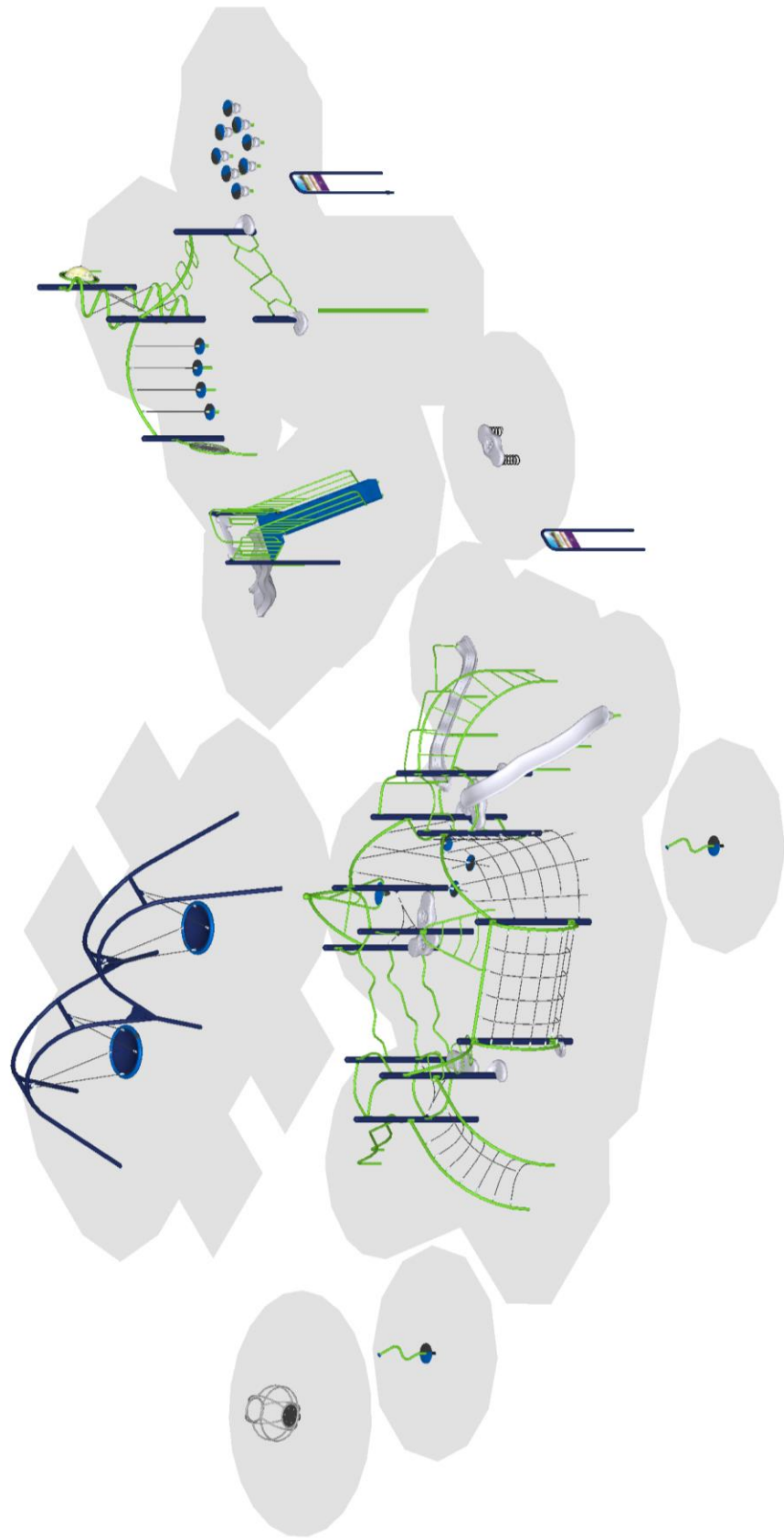
BCI Burke Company, LLC PO Box 549 Fond du Lac, Wisconsin 54936-0549 Telephone 920-921-9220



August 20, 2014

Buell Recreation  
907-82087-3

The protective surfacing for this design must accommodate the critical fall height.



August 20, 2014

SERIES: Basics, Intensity  
ISOMETRIC PLAN  
DRAWN BY: John Uelmen

Recreation Park  
98 Richards Way  
Sparks, NV 89431

Buell Recreation  
907-82087-3



# Proposal # 907-82087-3

August 20, 2014  
2014 Pricing

**Proposal Prepared for:**

Rick Darby  
City of Sparks  
431 Prater Way  
Sparks, NV 89431  
Phone:

**Project Location:**

Recreation Park  
98 Richards Way  
Sparks, NV 89431

**Proposal Prepared by:**

Buell Recreation  
7327 SW Barnes Rd. #601  
Portland, OR 97225  
Phone: 503-922-1650  
Fax: 866-597-0033  
doug@buellrecreation.com

Component No.	Description	Qty.	User Cap.	Ext. User Cap.	Weight	Ext. Weight
Voltage						
630-0004	POST ASSY 3 1/2 X 139	2	0	0	51	102
Burke Basics						
200-0045	BALANCE BEAM	1	4	4	67	67
230-0210	SLIDE PLATFORM AND STAIR 64"	1	6	6	294	294
430-0619	ROCK'N ROLL SLIDE, 64" - 72"	1	2	2	140	140
550-0157	VOLITO	1	4	4	409	409
550-0166	VOLITO ADD-ON BAY	1	5	5	249	249
560-0457	SWIFT TWIST SPINNER	2	1	2	52	104
560-0461	INTENSITY STEP SPOT POD 8" - ...	8	1	8	20	160
560-2570	COMET I	1	6	6	157	157
570-0770	DYNAMIC SURFER	1	2	2	96	96
580-1294	FS WELCOME SIGN, AGES 5-12 BO...	1	0	0	44	44
580-1296	FS WELCOME SIGN, AGES 2-5 BOT...	1	0	0	44	44
Intensity						
370-0001	AGILITY ARC	6	1	6	11	66
370-0002	PEP STEP	4	1	4	11	44
370-0003	VITAL VORTEX CLIMBER	1	2	2	34	34
370-0004	POWER PIPES CLIMBER	1	6	6	47	47
370-0005	ATHLETIC ARCH OH	1	5	5	64	64
370-0007	NIMBLE NET ROPE CLIMBER	1	8	8	124	124
370-0008	WILD WEB ROPE CLIMBER	1	6	6	77	77
370-0009	HEALTHY HAMMOCK	2	1	2	6	12
370-0010	AGILE CANYON ROPE CLIMBER	1	6	6	122	122
370-0014	HYPHER HELIX CLIMBER	1	6	6	74	74
370-0024	DYNAMIC DISCS	1	6	6	93	93
370-0025	SPINNER, EXTREME CYCLONE	1	3	3	136	136
370-0026	LIMBER LADDER ROPE CLIMBER	1	1	1	33	33
370-0029	DYNAMIC DISCS 2-5	1	6	6	121	121
370-0030	ATHLETIC ARCH 2-5	1	3	3	46	46
370-0034	ODYSSEY POST LINK SINGLE	1	2	2	39	39
370-0815	TWISTING TRAVERSE 2-5	1	5	5	100	100
370-1576	STRENGTH STEPPER CLIMBER	1	6	6	185	185
470-0100	RAPID RAILS, 48"	1	3	3	85	85
470-0101	DYNAMIC PAD	4	2	8	27	108
470-0102	SWIFT GLIDER	1	3	3	132	132
570-0687	CHARADE RING PANEL	1	2	2	60	60
570-0688	PADDLE BALL RING PANEL	1	2	2	54	54
670-0097	INTENSITY CURRICULUM KIT	1	0	0	2	2





# Proposal # 907-82087-3

August 20, 2014  
2014 Pricing

## Nucleus

600-0104	NPPS SUPERVISION SAFETY KIT	1	0	0	3	3
670-0002	POST ASSEMBLY 5" OD X 107"	2	0	0	58	116
670-0098	MODULAR HARDWARE, NUCLEUS	1	0	0	5	5
670-0099	INSTALLATION KIT, INTENSITY	1	0	0	2	2
670-0103	MAINTENANCE KIT, INTENSITY	1	0	0	0	0
670-0150	POST ASSEMBLY 5" OD X 80"	1	0	0	44	44
670-0165	POST ASSEMBLY 5" OD X 123"	2	0	0	66	132
670-0166	POST ASSEMBLY 5" OD X 139"	5	0	0	74	370
670-0167	POST ASSEMBLY 5" OD X 147"	4	0	0	78	312
670-0168	POST ASSEMBLY 5" OD X 158"	2	0	0	84	168

Total User Capacity: 140  
Total Weight: 4,876 lbs.

## BCI BURKE GENERATIONS WARRANTY™

### The Longest and Strongest warranty in the industry

BCI Burke Company, LLC ("Burke") warrants that all standard products are warranted to be free from defects in materials and workmanship, under normal use and service, for a period of one (1) year from the date of invoice.

#### We stand behind our products.

In addition, the following products are warranted, under normal use and service from the date of invoice as follows:

- One Hundred (100) Year Limited Warranty on aluminum and steel upright posts (including Intensity®, Voltage™, Nucleus™ and Little Buddies®) against structural failure due to corrosion, deterioration or workmanship.
- One Hundred (100) Year Limited Warranty on KoreConnect® clamps against structural failure due to corrosion, deterioration or workmanship.
- One Hundred (100) Year Limited Warranty on Hardware (nuts, bolts, washers)
- One Hundred (100) Year Limited Warranty on bolt-through fastening and clamp systems (Voltage™, Intensity®, Nucleus™ and Little Buddies®).
- Twenty-Five (25) Year Limited Warranty on spring assemblies and aluminum cast animals.
- Fifteen (15) Year Limited Warranty on main structure platforms and decks, metal roofs, table tops, bench tops, railings, loops and rungs.
- Fifteen (15) Year Limited Warranty on all plastic components including StoneBorders against structural failure due to materials or workmanship.
- Ten (10) Year Limited Warranty on ShadePlay Canopies fabric, threads, and cables against degradation, cracking or material breakdown resulting from ultra-violet exposure, natural deterioration or manufacturing defects. This warranty is limited to the design loads as stated in the specifications.
- Ten (10) Year Limited Warranty on NaturePlay® Boulders and GFRC products against structural failure due to natural deterioration or workmanship. Natural wear, which may occur with any concrete product with age, is excluded from this warranty.
- Ten (10) Year Limited Warranty on Full Color Custom Signage against manufacturing defects that cause delamination or degradation of the sign. Full Color Custom Signs also carry a two (2) year warranty against premature fading of the print and graphics on the signs.
- Five (5) Year Limited Warranty on Intensity® cables against premature wear due to natural deterioration or manufacturing defects.
- Five (5) Year Limited Warranty on swing seats and hangers; Kid Koaster® Trolleys and other moving parts against structural failure due to materials or workmanship.
- Three (3) Year Limited Warranty on electronic panel speakers, sound chips and circuit boards against electronic failure caused by manufacturing defects.

The warranty stated above is valid only if the equipment is erected in conformity with the layout plan and/or installation instructions furnished by BCI Burke Company, LLC using approved parts; have been maintained and inspected in accordance with BCI Burke Company, LLC instructions. Burke's liability and your exclusive remedy hereunder will be limited to repair or replacement of those parts found in Burke's reasonable judgment to be defective. Any claim made within the above stated warranty periods must be made promptly after discovery of the defect. A part is covered only for the original warranty period of the applicable part. Replacement parts carry the applicable warranty from the date of shipment of the replacement from Burke. After the expiration of the warranty period, you must pay for all parts, transportation and service charges.

Burke reserves the right to accept or reject any claim in whole or in part. Burke will not accept the return of any product without its prior written approval. Burke will assume transportation charges for shipment of the returned product if it is returned in strict compliance with Burke's written instructions.

**THE FOREGOING WARRANTIES ARE EXCLUSIVE AND IN LIEU OF ANY OTHER WARRANTY, EXPRESS OR IMPLIED, INCLUDING BUT NOT LIMITED TO ANY IMPLIED WARRANTY OR MERCHANTABILITY OR FITNESS FOR A PARTICULAR PURPOSE. IF THE FOREGOING DISCLAIMER OF ADDITIONAL WARRANTIES IS NOT GIVEN FULL FORCE AND EFFECT, ANY RESULTING ADDITIONAL WARRANTY SHALL BE LIMITED IN DURATION TO THE EXPRESS WARRANTIES AND BE OTHERWISE SUBJECT TO AND LIMITED BY THE TERMS OF BURKE'S PRODUCT WARRANTY. SOME STATES DO NOT ALLOW THE EXCLUSION OF CERTAIN IMPLIED WARRANTIES, SO THE ABOVE LIMITATION MAY NOT APPLY TO YOU.**

**Warranty Exclusions:** The above stated warranties do not cover: "cosmetic" defects, such as scratches, dents, marring, or fading; damage due to incorrect installation, vandalism, misuse, accident, wear and tear from normal use, exposure to extreme weather; immersion in salt or chlorine water, unauthorized repair or modification, abnormal use, lack of maintenance, or other cause not within Burke's control; and

**Limitation of Remedies:** Burke is not liable for consequential or incidental damages, including but not limited to labor costs or lost profits resulting from the use of or inability to use the products or from the products being incorporated in or becoming a component of any other product. If, after a reasonable number of repeated efforts, Burke is unable to repair or replace a defective or nonconforming product, Burke shall have the option to accept return of the product, or part thereof, if such does not substantially impair its value, and return the purchase price as the buyer's entire and exclusive remedy. Without limiting the generality of the foregoing, Burke will not be responsible for labor costs involved in the removal of products or the installation of replacement products. Some states do not allow the exclusion of incidental damages, so the above exclusion may not apply to you.

#### TERMS OF SALE

**Pricing:** Prices published in this catalog are in USD, are approximate and do not include shipping & handling, surfacing, installation nor applicable taxes. All prices are subject to change without notice. Contact your Burke representative for current pricing. Payments are to be made in USD.

**Weights:** Weights are approximate and may vary with actual orders.

**Installation:** All equipment is shipped unassembled. For a list of factory-certified installers in your area, please contact your Burke representative.

**Specifications:** Product specifications in this catalog were correct at the time of publication. However, product improvements are ongoing at Burke, and we reserve the right to change or discontinue specifications without notice.

**Loss or Damage in Transit:** A signed bill of lading is our receipt from a carrier that our shipment to you was complete and in good condition upon arrival.

Before you sign, please check the Bill of Lading carefully when the shipment arrives to make sure nothing is missing and there are no damages.

Once the shipment leaves our plant, we are no longer responsible for any damage, loss or shortage.

**For more information regarding the warranty, call Customer Service at 920-921-9220 or 1-800-356-2070. 01/2014**